

1912

DELTA
ALPHA
OF
SIGMA
NU

ALCO
ALPHA
3
E-12
14

L. L. Hopkins

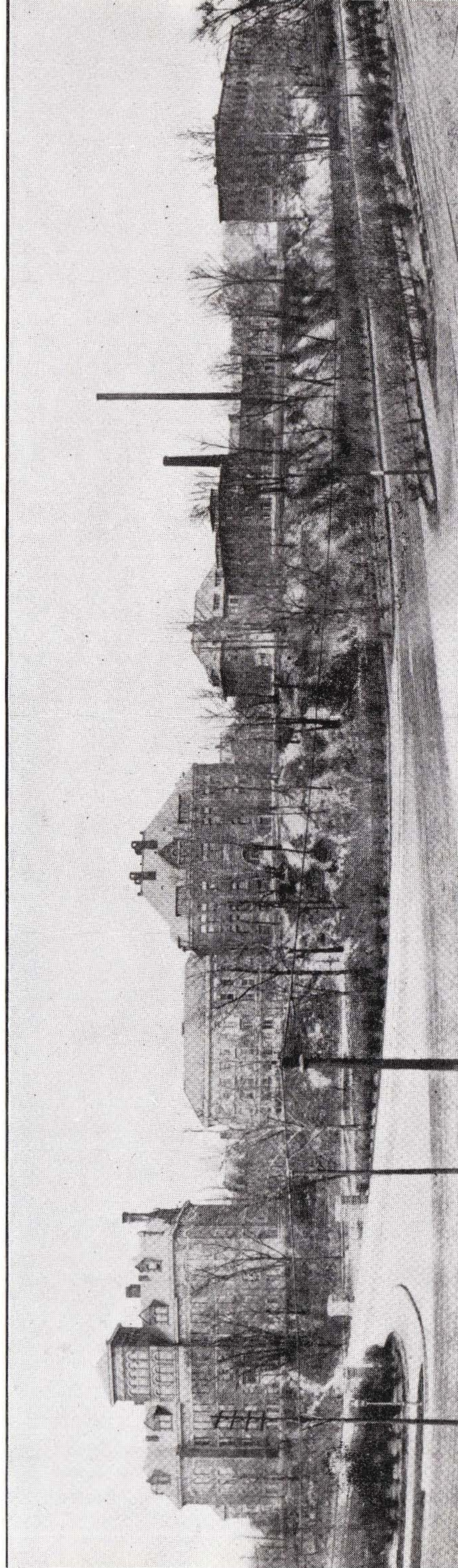
A. H. of E. N. '10



THIRD ANNUAL LETTER
of
DELTA ALPHA CHAPTER
of
SIGMA NU FRATERNITY

1 9 1 2

Case School of Applied Science
Cleveland



BUILDINGS OF CASE SCHOOL OF APPLIED SCIENCE.

CASE.

Our college, Case School of Applied Science, came into existence in 1880, as a school for engineers. Since that time it has flourished, grinding out engineers at a great rate, until now we have six large buildings and considerably over a million dollar equipment.

On practically the same campus is situated Western Reserve University. The two schools have absolutely no connection in management. Our location is, we claim, therefore rather unique. The presence of Reserve in our neighborhood offers another field for fraternities, and eight national fraternities, including our sister chapter, Delta Zeta, have entered that college.

The fraternities at Case are:

Name	Founded
Zeta Psi	1889
Phi Delta Theta	1896
Kappa Sigma	1903
Sigma Alpha Epsilon	1905
Beta Theta Pi	1906
Phi Kappa Psi	1906
Sigma Nu	1907
Sigma Chi	1909



CONTINUATION OF DELTA ALPHA'S HISTORY.

In our last chapter letter we published part of our chapter history with the expectation of completing it in this issue, thus bringing it up to the point where the yearly news letters begin. With this in view, we take up the history at the point where the petition of the six freshmen, D. W. Leggett, L. L. Hopkins, C. W. Francy, W. R. Denman, R. E. Berridge, and H. H. Woods, was taken to the Thirteenth Grand Chapter convention at Chicago. It must be remembered, however, that Hopkins was unable to join in his freshman year on account of parental objection, and in his stead the names of T. E. Bloxham and C. W. Cleaveland appear on the charter members' roll.

The prime movers of the Case petition were Brothers Tallmadge, Rockhill, and Waddle. They left Cleveland for Chicago, laden with the Case petition and a grip full of statistics on Case.

Bro. F. V. Keesling, vice regent at that time, and afterwards regent, was chairman of the extension committee, and to his influence is largely due the granting of the Case charter, since he was for Case from the start.

As is still the case nowadays, the petition met with opposition, the opposition clinging to the fact that Case was a scientific school and that many of its students came from Cleveland. Both of these claims were admitted as true, but these conditions did not, argued the promoters of the petition, prevent or in any way hinder the establishment and maintenance of a strong chapter at that institution. So finally, after a heated debate, a vote was taken, and being found favorable, Delta Alpha chapter came into existence, and into the hands of the founders was placed the destiny of Sigma Nu at Case.

Before proceeding, we must acknowledge our indebtedness to the men who fought the battle on the convention floor. They are W. J. Sears, Ferd. Heywood, Rawson Bennett, F. V. Keesling, Grand Regent Dyer, and last but not least, our own division inspector, George Waddle.



The chapter did not yet have a house or any prospect of one, so the first meetings were held in Francy's room. The first officers were:

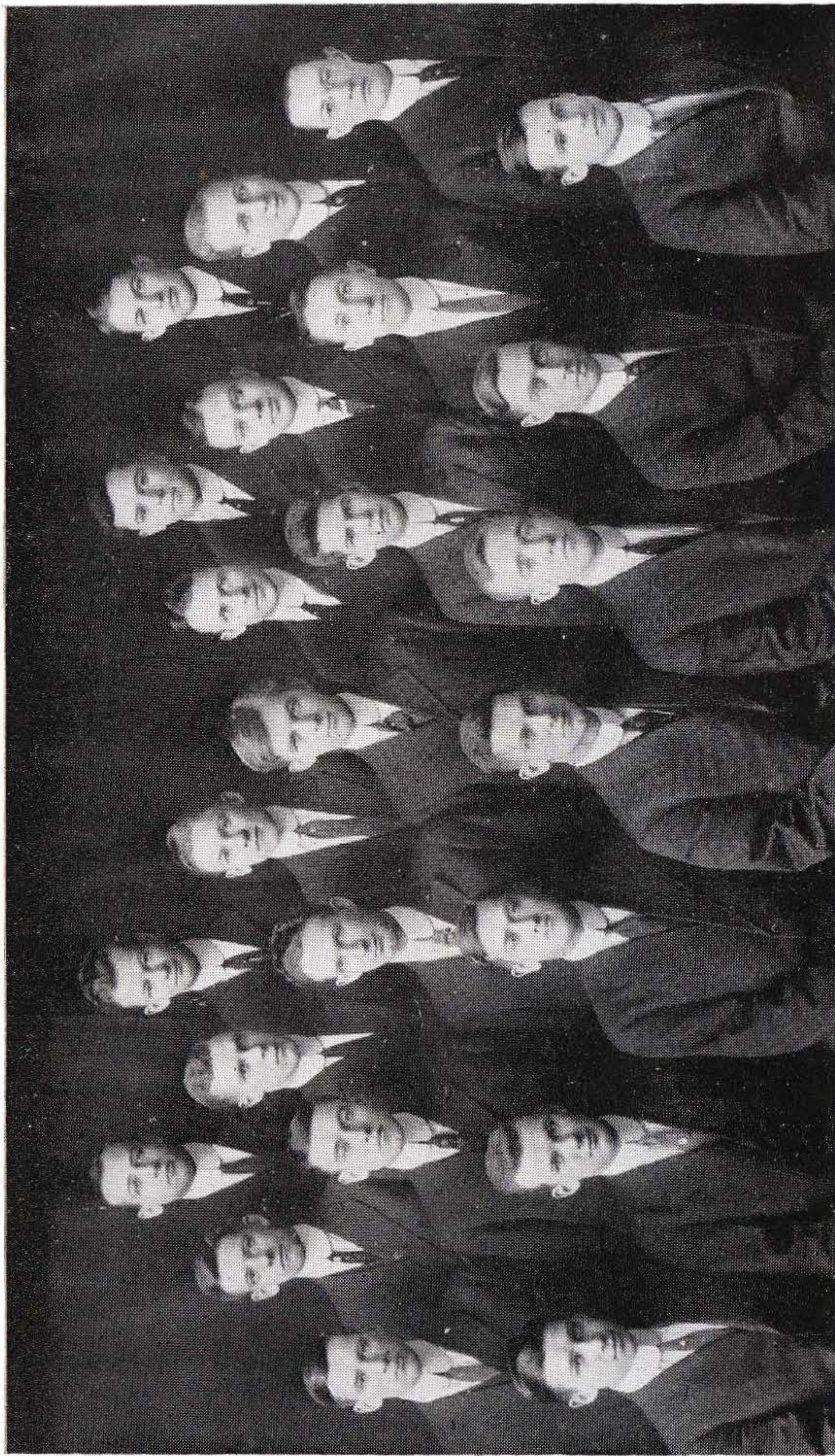
Commander, H. H. Woods;
Lieut. Commander, C. W. Cleaveland;
Reporter, D. W. Leggett;
Recorder, C. W. Francy;
Treasurer, T. E. Bloxham;
Sentinel, W. R. Denman;
Marshal, R. E. Berridge.

The oath of office was given Woods by Bro. Waddle, who was chosen by the Cleveland Alumni Association, and Woods in turn, swore in the other officers.

The first official chapter home was a suite of rooms on Carnegie Avenue, near 66th Street. Here the chapter remained until spring, when they moved into the first real chapter house at Cornell Place, near the college. From this house, they moved to the present chapter house on Cornell Road.

That the chapter began business on a modest scale may be deduced from the fact that the first motion made was to assess each member twenty-five cents for incidental expenses.

This history brings us to a point where the minute book keeps a record, also to a point where the first chapter letter was published. We may, therefore, bring the chapter history to a close, as far as a summation of hitherto unchronicled events is concerned. It is the sincere hope of the chapter that all new members, reading our early history, may appreciate the work done by the founders, and be brought to a realization of the fact that only by constant vigilance was the chapter put upon its present firm footing, and only by keeping up this vigilance, will its standing be maintained.



Ingersoll	G. Williams	Kneale	Darr	R. Williams	Maline	Bales	Snell	Moffet	Hough	Goddard
Beckman	Lynch	Clemens	Henthorne	Howells	Stewart	Stewart	Wenrick	Wenrick	Francy	Keim
	Herron		Stambaugh	Brooks	Smith					

WHO'S WHO IN DELTA ALPHA.

BROOKS, FORREST EDMUND, "Bullet," age 22, Warren, O. Class of 1912. Electrical Engineering. Eta Kappa Nu. College Supper Committee (3). "Case Tech." Board (4). Class Historian (4). Senate (4). Mandolin Club (4). Glee Club (4). Chairman of A. I. E. E. (3). ΣN Baseball. Commander of Delta Alpha, Spring term 1912. "The inventor of the toast and celery muffler, and the silent soup spoon."

SMITH, HOWARD RODNEY, "Howard," age 21, Longmont, Colo. Class of 1912. Chemical Engineering. Alpha Chi Sigma. Glee Club (1), (2), (3), (4). Leader (3), (4). Mandolin Club (3), (4). Pres. of Alembic Club (4).

Champion long distance eater of Delta Alpha.

MALINE, JOHN FRANCIS, Beta Nu No. 123, "Jack" "Shorty," age 26, Youngstown, O. Class of 1912. Civil Engineering. Cheer Leader (3), (4). Athletic Board (4). Senate (3), (4). Chairman College Supper Committee (3). ΣN Baseball. Commander of Delta Alpha, Fall term 1911-12. "Always there with the big Glad Hand."

FRANCY, ELMER NORRIS, "Elmer," "Goudy," age 23, Toronto, Ohio. Class of 1913. Mining Engineering. Varsity Football (2), (3). Captain-elect for 1912. Varsity Baseball (2). Junior Dance Committee (3). Class Vice Pres. (3). Skull and Bones. Pick and Shovel Club. ΣN Baseball "Slow death to those who snore."

BALES, GLEN HARRISON, "Glen." Age 25, Cleveland, O. Class of 1913. Civil Engineering. Asst. Editor Case Differential (3). Junior Dance Committee (3). Stadia Club. ΣN . Baseball. "Chess championship or bust."

HOWELLS, ELROY RAMSEY, "Abe." Age 20, Cleveland, O. Class of 1913. Electrical Engineering. Eta Kappa Nu. Asst. Editor Case Differential (3). Class Treasurer (3). Chairman College Supper Committee (3). ΣN Baseball. ΣN Basketball. "He's strong for everybody else's girl."

MOFFET, JAMES ALANSON, "Jim." Age 22, Cleveland, O. Class of 1913. Civil Engineering. Case Band (1), (2), (3). Leader (3). Senate (2). Stadia Club. ΣN Baseball. "Author of How to be Happy Though Married."

GODDARD, MURRAY COWDERY, "Grandma." Age 22, Unionville, O. Class of 1913. Civil Engineering. Glee Club (3). "The Sachet Kid."

HERRON, HORACE BEE, "Mike." Age 20, Cleveland, Ohio. Class of 1913. Chemical Engineering. Alpha Chi Sigma. Alembic Club. Class Historian (2). College Supper Committee (3). ΣN Baseball. "The pet of every school ma'am in Cleveland."

WILLIAMS, GEORGE TRANTER, "Tramp." Age 23, Youngstown, Ohio. Class of 1913. Chemical Engineering. Alpha Chi Sigma. Alembic Club. ΣN Baseball. "All the time they keep a'pickin' on me."

LYNCH, HARRY CLIFTON, "Lafe," "Tony." Beta Nu No. 145. Age 22, Mansfield, Ohio. Class of 1913. Civil Engineering. Skull and Bones. Stadia Club. College Supper Committee (3). Senate (3). ΣN Baseball. ΣN Basketball. "Personally conducted parties his specialty."

HENTHORNE, HARRY FOVARGUE, "Hen." Age 27, Newark, Ohio. Class of 1913. Electrical Engineering. Glee Club (2), (3). ΣN Basketball. "He admits that German has his goat."

SNELL, FREDERICK EARL, "Freddy." Age 22, Cleveland, O. Class of 1914. Mechanical Engineering. Glee Club (1), (2), (3). "Can he come back? Well we guess yes."

STEWART, DONALD GARDNER, "Don." Age 20, New Cumberland, W. Va. Class of 1914. Mechanical Engineering. ΣN Baseball. "Hasn't that boy got the babyish face?"

HOUGH, VICTOR BOLTON, "Tubby." Age 20, Wellsburg, W. Va. Class of 1914. Mechanical Engineering. "Built low for comfort, not speed."

KEIM, THURLOW YORK, "Ty." Age 19, Cleveland, Ohio. Class of 1914. Chemical Engineering. Alembic Club. ΣN Baseball. ΣN Basketball. "The originator of the pointless joke."

KNEALE, WILLIAM EDWARD, "Ed." Age 21, Cleveland, O. Class of 1914. Electrical Engineering. "When Caesar speaks, let no dog bark."

INGERSOLL, JONATHAN, "Inky." Age 23, Youngstown, O. Class of 1915. Mining Engineering. Glee Club (1). "He sleeps, and sleeps, and sleeps."

WENRICK, JOHN COURTNEY, "Hans." Age 19, Canton, O. Class of 1915. Civil Engineering. ΣN Basketball. "Are you trying to kid me or show me a good time?"

WILLIAMS, WILLIAM ROY, "Roy." Age 21, Youngstown, Ohio. Class of 1915. Mining Engineering. Mandolin Club (1). "Thinks Sherman should have said 'Math.' instead of 'War'."

STAMBAUGH, PHILIP MORRIS, "Phil," "Apollo." Age 21, Youngstown, O. Class of 1915. Electrical Engineering. "The only man in exile during leap year."

DARR, CHARLES LEO, "Leo." Age 20, Port Clinton, Ohio. Class of 1915. Electrical Engineering. "He snores in the key of C."

CLEMENS, GEORGE LEOFFLER, "George." Age 20, Cleveland, Ohio. Class of 1915. Electrical Engineering. ΣN Basketball. "All the girls like these football boys."

BECKMAN, ELMER HERMAN, "Beck." Age 18, Cleveland, Ohio. Class of 1915. Chemical Engineering. ΣN Basketball. "The baby of the Chapter, just sweet eighteen."

Elmer Francy is Delta Alpha's most successful athlete. He entered Case in 1909, but did not go out for any kind of athletics until his sophomore year. In the fall of 1910 he took an active part in football, and immediately made good, making a place on the varsity. During the last football season he played a star game at right end for Case, and it was conceded that he would surely make a place on the All Ohio Eleven. But in the Ohio State game he met with an injury that put him slightly out of the running. At the meeting of the team after the season was over, his teammates showed their appreciation of his work and their faith in his ability by electing him football captain for the season of 1912. We all feel sure that under his leadership the team will have a very successful year, and that Case will have her best chance of bringing home the Ohio State championship. Brother Francy is also a baseball player of more than ordinary ability. He played left field on the varsity the past two seasons, and will be on the line-up this coming spring.



ELMER NORRIS FRANCY, '13
Captain Football Team

DELTA ALPHA'S SHARE IN THE COLLEGE ACTIVITIES.

Inasmuch as it is very easy to pad up the amount of college activity displayed by a chapter by filling in with a lot of insignificant college duties, we will include in this list only such activities as are credited to a man by the college annual at the time he graduates. They are as follows:

FOOTBALL.

We have one man on the football team—Elmer Francy. He played right end regularly, and in addition to being chosen by some critics for the "All Ohio" eleven, was elected varsity captain for the coming year. At Case, the football captaincy is easily the highest office that may be held by a student.

BASEBALL.

Our star athlete, Francy, again upheld the fraternity reputation by playing left field on the varsity ball team last spring.

CLASS OFFICERS.

The following men hold offices in their classes:

John Maline, Senator, Senior Class;

Forrest Brooks, Historian, Senior Class;

Elmer Francy, Vice-President, Junior Class;

Elroy Howells, Treasurer, Junior Class.

JUNIOR COMMITTEES.

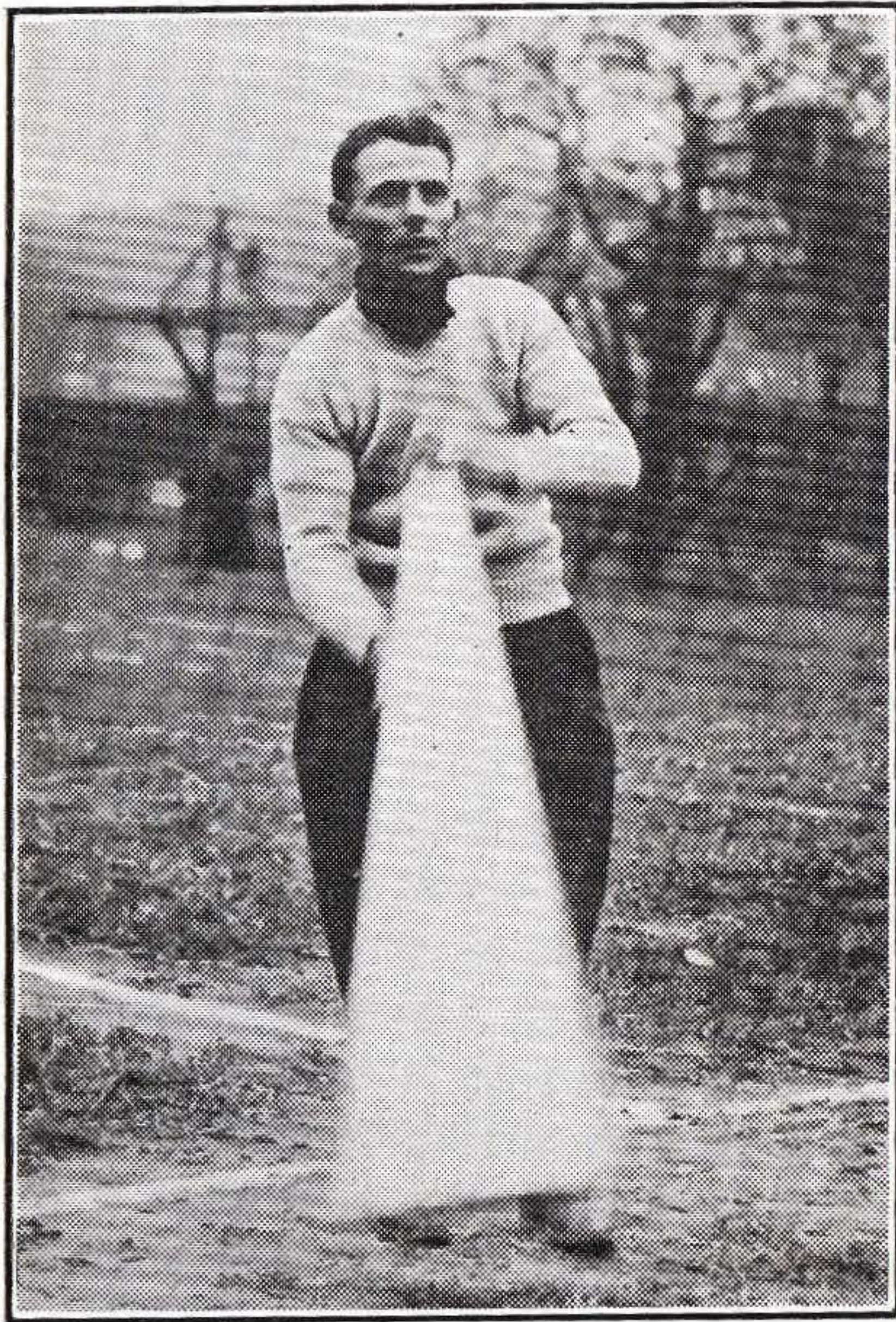
At Case, as in most colleges, the junior class elects men to publish the college annual, to give school dances, etc. We were fortunate in securing this year, more than our share of these offices, which are much sought after by all fraternities, as well as the non-frat men:

Junior Dance Committee—Elmer Francy, Glen Bales.

Annual Board—Elroy Howells, Glen Bales.

STUDENT COUNCIL.

The student council at Case is called the School Senate and its members Senators. Each organization is entitled to a senator. The following Sigma Nus are senators: John Maline, Forrest Brooks, Harry Lynch, Elmer Francy.



"SHORTY" MALINE, '12
Cheer Leader

HONORARY SOCIETIES.

In addition to the honorary class societies at Case, there are several national professional engineering fraternities. As it is advantageous to belong to one of these, we will include them in our list. It must be remembered, however, that only upper classmen are admitted, and that these fraternities are not for all engineering courses.

Alpha Chi Sigma, Chemical Fraternity—Howard Smith, Thurlow Keim, George Williams, Horace Herron.

Eta Kappa Nu, Electrical Engineering Fraternity—Forrest Brooks, Elroy Howells.

Skull and Bones, Junior Class Society—Harry Lynch, Elmer Francy.

COLLEGE WEEKLY.

The Case Tech, the college weekly, has an editorial board of eight men. Of this staff, Sigma Nu has one—Forrest Brooks.

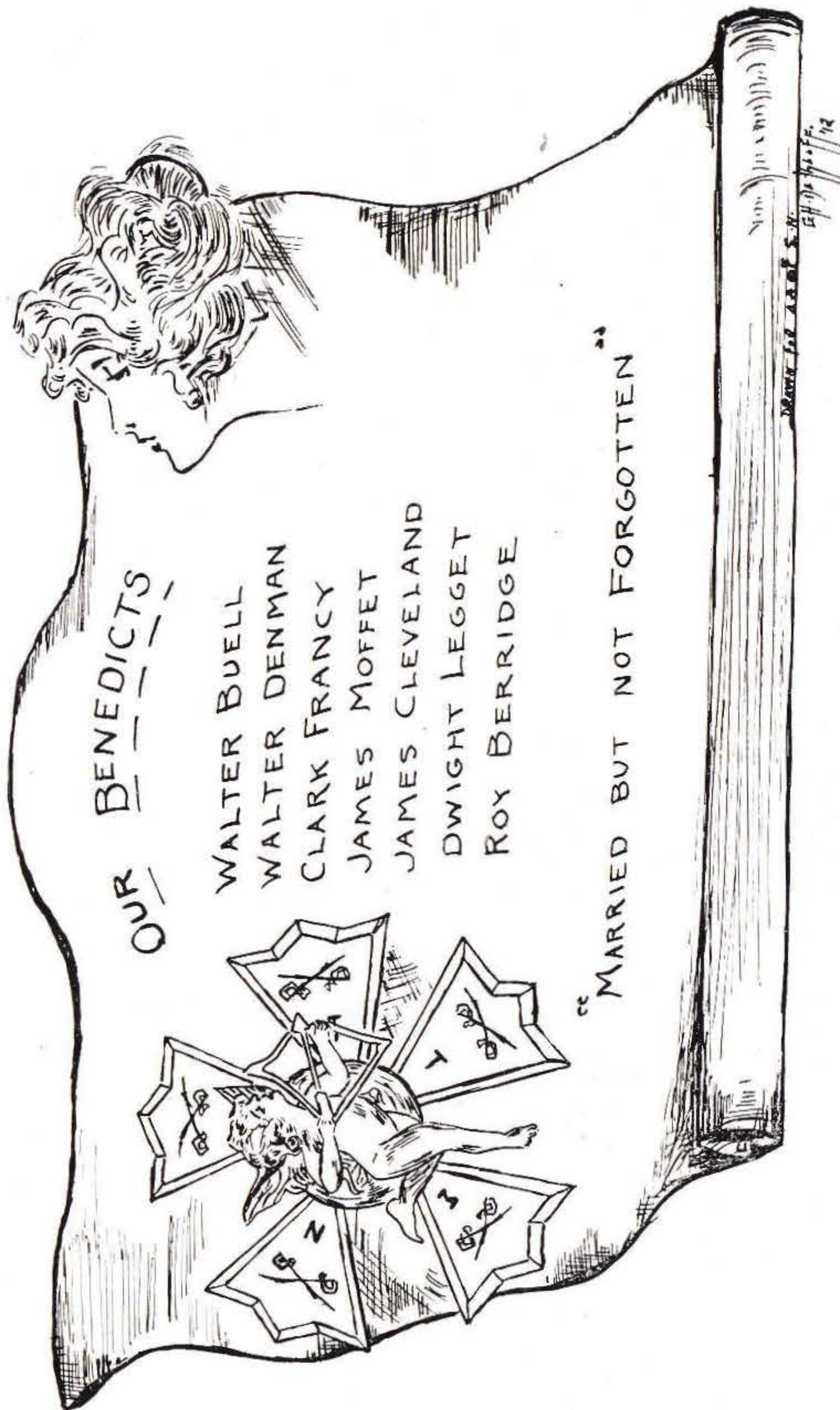
MUSICAL CLUBS.

Sigma Nu is fortunate in having a comparatively large number of men on the Musical Clubs this year. Aside from Howard Smith, who has been leader of the Glee Club for the past two years, the Sigma Nu members are:

Murray Goddard, Forrest Brooks, Fred Snell, Harry Henthorne, John Ingersoll, Roy Williams.

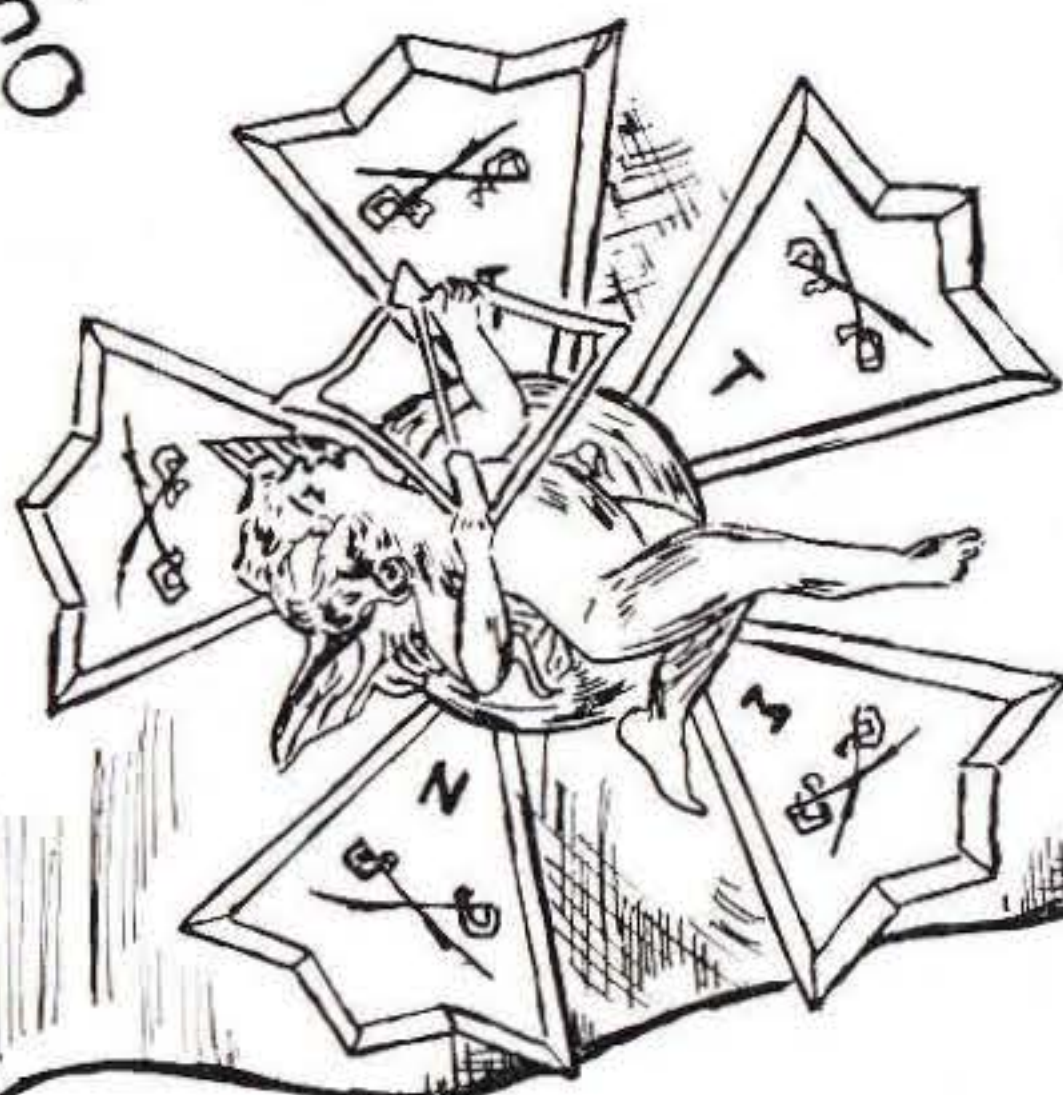
SCHOOL SUPPER COMMITTEE.

A committee of students is elected yearly from the junior class to arrange for a banquet for the entire school and all alumni who can be present. This year three of the five men are Sigma Nus: Elroy Howells, Harry Lynch and Horace Herron. Howells is chairman of the committee.



OUR BENEDICTS

WALTER BUELL
WALTER DENMAN
CLARK FRANCY
JAMES MOFFET
JAMES CLEVELAND
DWIGHT LEGGET
ROY BERRIDGE



"MARRIED BUT NOT FORGOTTEN"

THE SOCIAL SIDE OF OUR FRATERNITY LIFE.

Case being a technical school allows the students less time for social enjoyment than a liberal arts college. Our social life is therefore somewhat restricted. We have, however, given enough parties to keep "brushed up" on our manners.

Our first effort was a stag affair—a rush smoker, given the evening of the day on which school opened. We had previously pledged three freshmen and had two more lined up, so no effort was made to "spike" men at this gathering. We were enabled to look over eight or ten freshmen, however, and with the aid of a few "profs," had a most enjoyable evening. One rushee was so favorably impressed with us that he nearly forgot to go home, but was finally made to see that the party was breaking up.

The social committee next set about to have a Hallowe'en party, so on the Saturday evening before Hallowe'en, about eighteen couples, chaperoned by Mr. and Mrs. W. E. Kneale, who, by the way, have taken great interest in our chapter, gathered at the house and enjoyed a social evening of games, small talk, memory books, and refreshments.

All along in the fall, during football season, we have entertained from four to eight or ten girls at informal parties after the football games. These gatherings were strictly informal and impromptu, so no record of them was kept.

One of the pleasantest evenings spent by this chapter was at "Abe" Howell's party last fall. "Abe's" sister, Miss Jean Howells, is a member of the Sigma Psi sorority at Western Reserve Woman's College; so Miss Howells and "Abe" entertained their respective sorority and fraternity one evening with the result that everyone had the time of their lives, with the possible exception of Smith, who steadfastly refused to take a girl home, but went home alone, hungry and hatless.

"Abe's" party came at a very opportune time in that it gave us an opportunity to make preparations for an initiation dance on November 12th; said "preparations" consisting of "booking" an especially fine bunch of girls for the

affair. About thirty couples, chaperoned by Mr. and Mrs. Kneale, were present. An exceptionally fine time was afforded at this dance by our ever efficient dance committee.

Few chapters are as fortunate as we are in having a sister chapter within two minutes walk. Delta Zeta Chapter of Western Reserve University is near our house and though we pay frequent calls, we deemed it advisable to further our acquaintance, as in past years, by giving a smoker in their honor. Accordingly, on January 27th, we entertained that chapter and several faculty members at a stag party in which cards and music, together with innumerable cigars and cigarettes, made a very pleasant evening.

Upon February 6th, we held another dance, which was similar to the first, except that Smith and Henthorne brought the same girls they had at our last affair.

The last event, up to the time of going to press, was a Cleveland Sigma Nu banquet, held at the Colonial Hotel on March 1st. All the active members of both chapters were present, also nearly all the alumni chapter. Bro. Maline responded in his usual characteristic style to the toast "Delta Alpha."

SENIORS.



FORREST EDMUND BROOKS—

Note the manly looks on "Bullet's" face, and compare it mentally with the way he will look in six months from now, working with the telephone Co. in the heart of New York City.



JOHN FRANCIS MALINE—

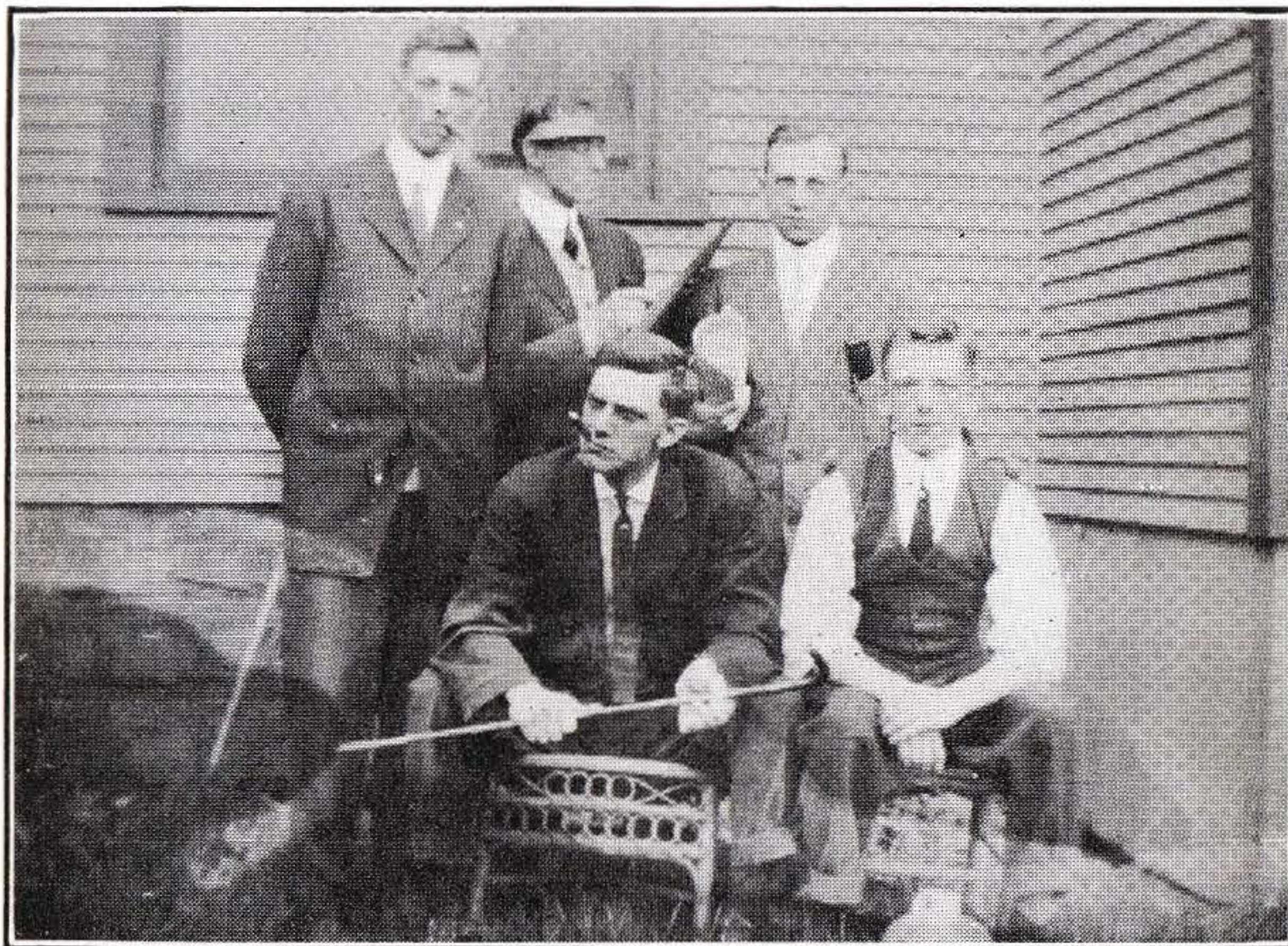
Here's "Shorty" Maline; the smile on his face is caused by the thought that he is almost a Civil Engineer, and will soon have a happy home in Youngstown, Ohio.



HOWARD RODNEY SMITH—

Note the hungry look on Rodney's face. He will start a Chem. Lab. of his own in Longmount, Ohio, when he graduates. Let's hope he discovers a hunger-appeasing chemical.

EDITORIAL BOARD



“INKY” “GRANDMA” “ED”
 “BULLET” “TRAMP”



THE FRESHMEN.

For the benefit of our alumni we wish to say a few words concerning the new men. Thus far we have initiated seven of the finest of the freshman class and we look for the class of 1915 to be one that will be remembered in Delta Alpha. Here they are:

George Clemens. He prepared at Glenville High School of this city where he was very active in athletics and school activities. He played football two years, captaining his team during his senior year; two years baseball; two years track, besides holding numerous class and school offices. Incident-

ally Sigma Nu was his choice over four other national fraternities.

John Wenrick alias "Hans" is from Canton, O., famous as the home of Wm. McKinley and Deuber-Hampden watches. During his high school days he did some track work and class basketball besides managing the school baseball team for a season. He was also active in school dramatics and his class play. He will be an active man in his college career and a valuable man in the fraternity.

Roy Williams is from Youngstown, Ohio. His athletic experience consists of two years' baseball and one year football, but he is better known to us on account of having made the mandolin club in his freshman year at college. He is probably too light for college football, but a brilliant future awaits him in other fields than athletics.

Leo Darr is one of the natives of Port Clinton, Ohio. He attended Port Clinton High School and Notre Dame Academy before entering Case, but was never large enough to be an athlete. He was active in school societies but devotes most of his time to automobiles and girl (s). Brother Waddell has said that Leo is the only real gentleman in Delta Alpha, but we can hardly admit to that.

Philip Stambaugh answers to the name of "Phil" or "Apollo." His home is in Youngstown, Ohio. His high school career was in two parts and it was in his last year that he became famous by being elected the most beautiful man in his class. Phil is a "shark" at school and a wizard at the piano. Parental objection has always kept him from football, but if this could be overcome he would surely make a name for himself as he has the build and the inclination, which goes a good way towards making an athlete.

Jonathan Ingersoll, invariably called "John" or "Inky," is another Youngstown product. He has had his brain settled a little more than the average freshman by three years in the steel mills in his home town. If he applies his experience and serious thoughts to his work he will be a valuable man in his chapter. Already he has made his position on the glee clubs. In his high school days he was to be found

CHAPTER ROLL.

1. Clark Wilson Francy, Toronto, O.—Electrical Engineer with Ohio Valley Scenic Route.
2. Walter Ross Denman, 166 W. Exchange St., Akron, O.—The Goodyear Tire & Rubber Co.; Mechanical Engineer.
3. Roy Edward Berridge, 28 Nathan St., Ashtabula, O.—Inspector L. S. & M. S. Ry. Co.
4. Dwight Walton Leggett, 10 King St., Ashtabula, O.—Civil Engineer in County Engineer's office.
5. Thomas Earl Bloxham, 552 Grand Ave., Rochester, N. Y.—Electrical Engineer with New York Telephone Co.
6. Charles William Cleaveland, care H. M. Byllesby Co., Chicago, Ill.—Civil Engineer.
7. Harold Haines Woods, 52 N. Park Ave., Alliance, O.—Electrical Engineer, The Verluxe Co.
8. Walter Augustus Buell, Sulphur, La.—Mechanical Engineer.
9. Clayton Earle White, National Lamp Co., Cleveland, O.—Electrical Engineer.
10. James Wilson Cleaveland, 218 La Salle St., Chicago, Ill.—Mechanical Engineer with H. M. Byllesby Co.
11. John Floyd Schaefer, 175 Marion Ave., Mansfield, O.—Teacher.
12. Samuel Galloway Hibben, care Macbeth Evans Glass Co., Pittsburg, Pa.—Electrical Engineer.
13. David Alva Gilbert, General Delivery, Ambridge, Pa.—Civil Engineer with The American Bridge Co.
14. Carl Jacobsen, 2652 E. 68th St., Cleveland, O.—Civil Engineer with The Cary Construction Co.
15. Don Carl Orwig, Napoleon, O.—with The Northwestern-News Publishing Co.

16. Martin Luther Burchfield, Jr., 2288 E. 89th St., Cleveland, O.—Electrical Engineer.
17. Ralph Howard Atkinson, 46 Stanwood Rd., Cleveland, O.—Chemist with The National Carbon Co.
18. Frederick Earl Snell, 9419 Harvard Ave., Cleveland, O.—Student.
19. Glen Harrison Bales, Sigma Nu House, Cleveland, O.—Student.
20. Elroy Ramsay Howells, 10711 Miles Ave., Cleveland, O.—Student.
21. Lynn West Callender, Hotel Moreland, Cleveland, O.—Clerk, Hotel Moreland.
22. Lawrence Leonard Hopkins, care Macbeth Evans Glass Co., Pittsburg, Pa.—Electrical Engineer.
23. Elmer Norris Francy, Sigma Nu House, Cleveland, O.—Student.
24. Charles Franklin Hulien, care Union Club, Cleveland, O.—Clerk, Union Club.
25. James Alanson Moffet, 1397 E. 109th St., Cleveland, O.—Student.
26. Murray Cowdery Goddard, Sigma Nu House, Cleveland, O.—Student.
27. John Francis Maline, Sigma Nu House, Cleveland, O.—Student.
28. Harry Clifton Lynch, Sigma Nu House, Cleveland, O.—Student.
29. Donald Gardner Stewart, Sigma Nu House, Cleveland, O.—Student.
30. Harry Fovargue Henthorne, E. 105th Street, Cleveland, O.—Student.
31. Thurlow York Keim, 696 E. 115th Street, Cleveland, O.—Student.
32. Victor Bolton Hough, Sigma Nu House, Cleveland, O.—Salesman The Steiner Coal Co.

33. Horace Bee Herron, 1228 E. 111th Street, Cleveland, O.—Student.
34. Forrest Edmund Brooks, Sigma Nu House, Cleveland, O.—Student.
35. Howard Rodney Smith, Sigma Nu House, Cleveland, O.—Student.
36. George Tranter Williams, Sigma Nu House, Cleveland, O.—Student.
37. William Edward Kneale, Cleveland, O.—Student.
38. William Roy Williams, Sigma Nu House, Cleveland, O.—Student.
39. Philip Morris Stambaugh, Sigma Nu House, Cleveland, O.—Student.
40. Jonathan Ingersoll, E. 105th Street, Cleveland, O.—Student.
41. John Courtney Wenrick, Cleveland, O.—Student.
42. Charles Leo Darr, Sigma Nu House, Cleveland, O.—Student.
43. George Leoffler Clemens, 50 Fernwood Avenue, Cleveland, O.—Student.
44. Elmer Herman Beckman, 10919 Churchill Avenue, Cleveland, O.—Student.

approved May 29 1912

Leys & Waddle

Inspectors Div IV

