

Delta Alpha



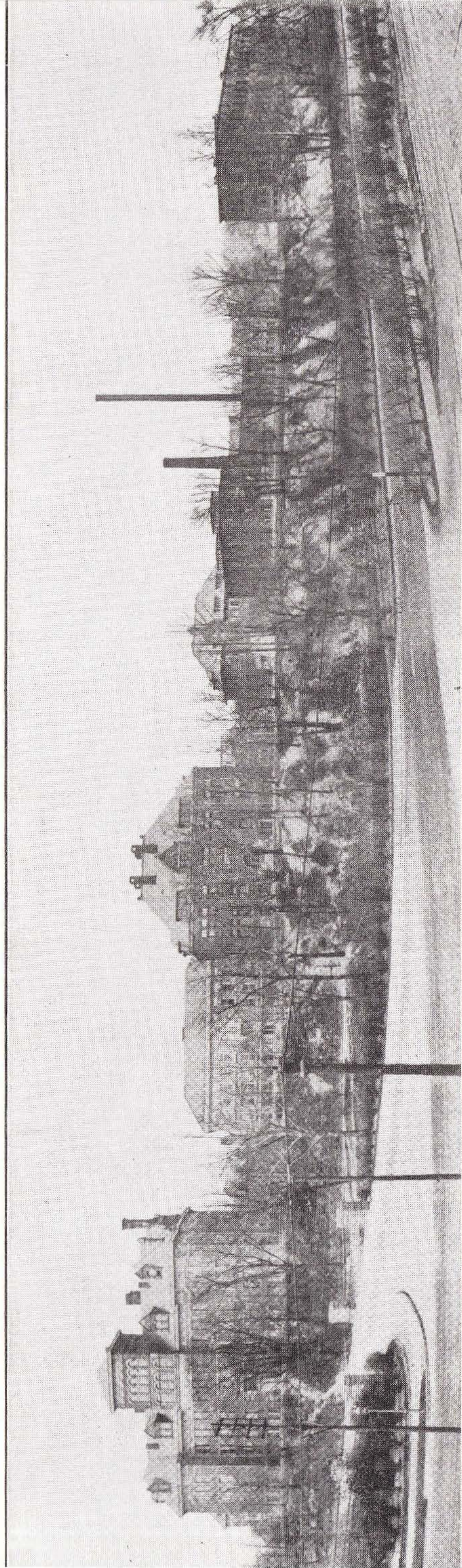
Sigma Nu

THIRD ANNUAL LETTER
of
DELTA ALPHA CHAPTER
of
SIGMA NU FRATERNITY

1914

Case School of Applied Science
Cleveland

Donated ΔA 0050
SUMMER 1978



BUILDINGS OF CASE SCHOOL OF APPLIED SCIENCE

CASE.

Case School of Applied Science was founded in 1880. It has grown rapidly since that time and is now one of the leading engineering schools of the country. There are six hundred men in school studying the different branches of Engineering.

Being situated as the college is in the City of Cleveland, the men have the advantage of the practice of the manufacturing plants.

There are eight national fraternities at Case. These fraternities are:

Name	Founded
Zeta Psi	1889
Phi Delta Theta	1896
Kappa Sigma	1903
Sigma Alpha Epsilon	1905
Beta Theta Pi	1906
Phi Kappa Psi	1906
Sigma Nu	1907
Sigma Chi	1909



L. W. CALLENDAR.



W. E. KNEALE.



E. N. FRANCY.



H. F. HENTHORNE.



F. E. SNELL.

OUR SENIORS.

This year we have five men who will leave us. The hole left in the Chapter by the graduation of these men will be a hard one to fill. Nobody but the men closely associated with them know how hard they have worked for the Chapter and for Sigma Nu. They have been Sigma Nus in the highest sense of the word. We all regret that they are leaving us and our best wishes and regards go with them for their success.

THE NEW MEN.

This fall we initiated five freshmen and two sophomores. They all are fine men and bid fair to help Sigma Nu along on her way to progress.

P. A. Bloom, from Central High School, Akron, O.

L. A. DeCoutres, from Meadville High School, Meadville, Pa.

T. E. Hays, from Minneapolis, Minn.

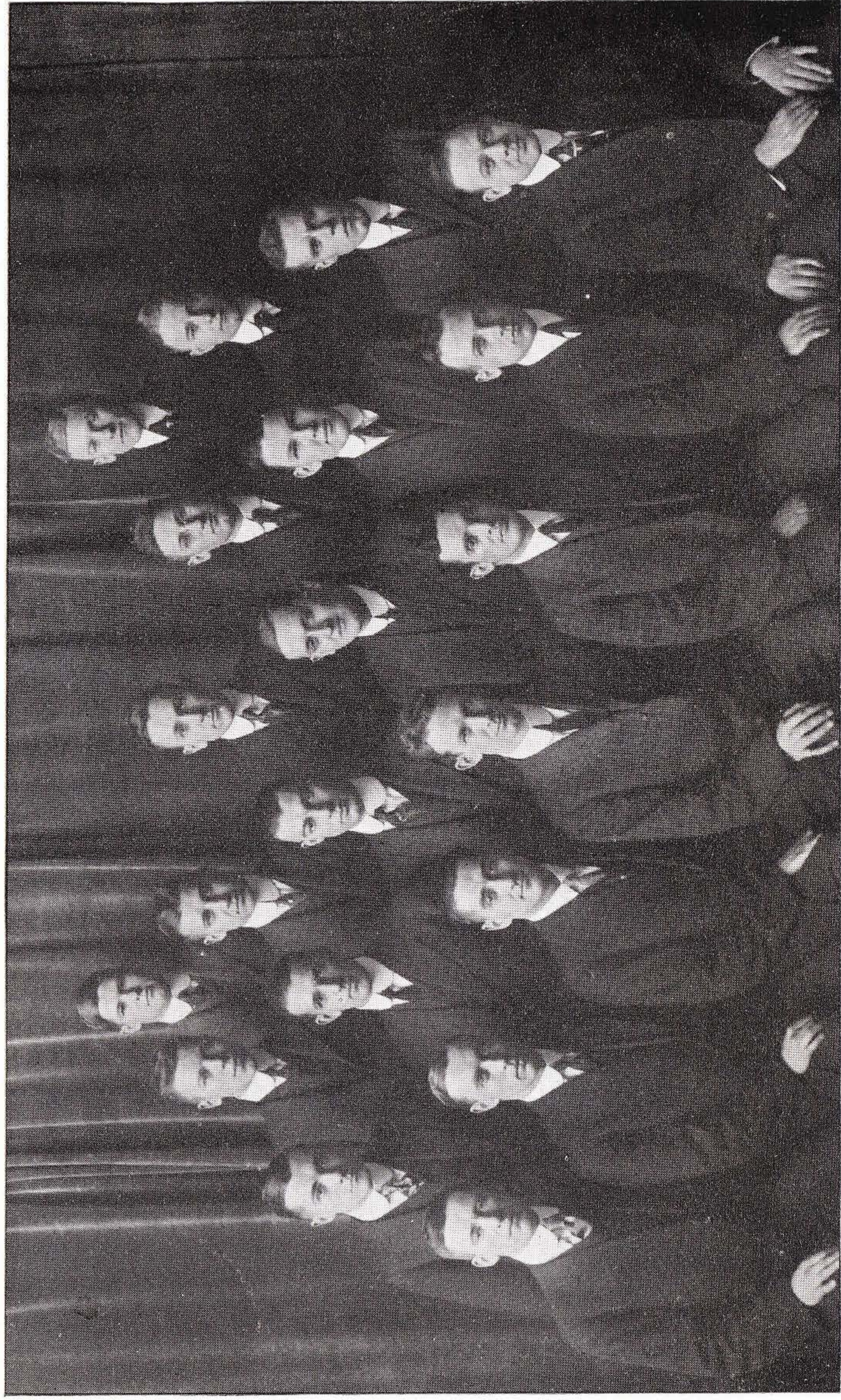
K. L. Chrysler, from Billings' High School, Billings, Mont.

C. A. Allen, from Ashtabula High School, Ashtabula, O.

Harold Church Hopkins, from Ashtabula High School, Ashtabula, O.

G. H. Markt, from Norwalk High School, Norwalk, O.

Carl F. Benner, from Central Institute, Cleveland, O.



D. Hindman					W. R. Williams						
G. H. Markt	E. H. Beckman	J. C. Wenrick	H. L. Kidder	P. A. Bloom							
T. E. Hays	S. Krall	H. W. Vanderwerf	P. M. Stambaugh	L. A. DeCoudres	G. L. Clemens						
J. Ingersoll	E. N. Francy	C. G. Benner	H. F. Henthorne	L. W. Callendar	W. E. Kneale	F. E. Snell					
Also: C. W. Allen					K. L. Chrysler					H. C. Hopkins	G. M. Kryder

DELTA ALPHA'S NATIONAL GUARD.

HENTHORNE, HARRY FOVARGUE, "Hen." Age 29. Class of 1914. Electrical Engineering. Glee Club (2), (3). "The little alarm clock of Sigma Nu."

CALENDAR, LYNN WEST, "Molly." Age 25. Class of 1914. Mining Engineering. Football (3), (4). Skull and Bones (3). Pick and Shovel Club. "He is not only a pinch hitter but he is good in a pinch."

SNELL, FREDERICK EARL, "Shreddy." Age 24. Class of 1914. Mechanical Engineering. Glee Club (1), (2), (3). "He never forgets to write and he is partial to Shredded Wheat."

KNEALE, WM. EDWARD, "Ed." Age 23. Electrical Engineering. Class of 1914. "Checkers was too slow a game in New York he was *speedin'*!"

FRANCY, ELMER NORRIS, "Elmer." Age 25. Class of 1914. Mining Engineering. Football (2), (3), (4). Captain for 1912. Asst. Coach 1913. Junior Dance Committee (3). Class Vice-Pres. (3). Baseball (2), (3), (4). Captain 1913. Pick and Shovel Club. "He has Solomon Levi beat when it comes to old clothes sales."

WILLIAMS, WM. ROY, "Goat." Age 23. Class of 1915. Mining Engineering. Mandolin Club (1), (2), (3); Leader (3). Class Secretary (3). Skull and Bones. Pick and Shovel Club. "Yes, thank you, I am still taking Calculus."

WENRICK, JOHN COURTNEY. Age 21. Civil Engineering. Class of 1915. Stadia Club (2), (3). Junior Class Supper Committee (3). Track Team (3). "He is the last of the Civils in Sigma Nu, and spends his spare moments singing Sympathy."

CLEMENS, GEO. LEOFFLER, "Slugger." Age 22. Class of 1915. Mining Engineering. Varsity Baseball (2), (3). Junior Dance Committee (3). School Supper Committee Chair. (3). Case Differential Board (3). Class Senator (3). Skull and Bones. Pick and Shovel Club. "His specialty is knocking out tough characters, and he's a devil in his own home town."

BECKMAN, ELMER HERMAN, "Beck." Age 20. Class of 1915. Chemical Engineering. Varsity Baseball (2), (3). "If you want to get him sore call him Herman."

VANDERWERF, HOWARD WITZEL, "Dutch." Age 22. Class 1916. Electrical Engineering. "He and Cupid are now boon companions."

STAMBAUGH, PHILLIP MORRIS, "Phil." Age 23. Class 1915. Electrical Engineering. "He stands with Shakespeare when he says, 'The man who has no music in his soul—etc.'"

INGERSOLL, JONATHAN, "Inky." Age 25. Class of 1915. Mining Engineering. Glee Club (1), (3). Pick and Shovel Club. "Of all the men in school why should Teddy pick on me?"

HINDMAN, DARWIN ALEXANDER, "Hux." Age 19. Class 1916. Mechanical Engineering. "He can argue on any subject but he can't smoke strong cigars."

KRALL, STANLEY, "Stan." Age 19. Chemical Engineering. Class of 1916. Sophomore Banquet Committee *Chair*. Alpha Chi Sigma. "Oh what is so rare as an evening in Lakewood with the band playing 'I am coming back to you'!"

KIDDER, HOWARD LORIN, "Bud." Age 19. Class of 1916. Mechanical Engineering. Mandolin Club (2). "I love the girls and the girls love—to dance."

KRYDER, GEO. MONROE, "Buck." Age 20. Class of 1917. Chemical Engineering. "Yes I'm Mr. Kryder from Akron."

BENNER, CARL FRITZ, "Butch." Age 27. Class of 1916. Electrical Engineering. Glee Club (1), (2). "Church suppers and horse trotting are his delight."

MARKT, GEO. HOWARD, "Prof." Age 21. Class of 1916. Mechanical Engineering. "He is Senator Huxley's chief advisor and next year he hopes to teach Popular Mechanics."

DECOUDRES, LOUIS ALLAINE, "Lou." Age 19. Class of 1917. Civil Engineering. "He made a name for himself as the best furnace man in the bunch."

HAYS, THEO. EDWARD, "Dusty." Age 20. Class of 1917. Civil Engineering. "The Chem. Lab. kid or the fellow who went to exams supersaturated."

CHRYSLER, KENNETH LYNN, "Chrys." Age 21. Class of 1917. Civil Engineering. "The man from Montana."

ALLEN, CHAS. WALTER, "Phvsiker." Age 22. Class of 1917. Senator, Class (1). "He was such a good little rooter."

BLOOM, PAUL ALLEN, "Bloomis," "Lovey." Age 20. Class of 1917. Mining Engineering. Home Concert (1). "Dancing is his big act, but he is also noted for the ease with which he dazzles the ladies."

HOPKINS, HAROLD CHURCH, "Hop." Class of 1917. Electrical Engineering. "He is tall and thin but everybody likes a thin man."

SIGMA NU SOCIAL SEASON, 1913-14.

A few years ago, social life at Case seemed almost at a standstill. This was partly due to the fact that Case being a technical school, allows the students little time for social affairs. However, this condition of affairs has been improved as our record of social events will show.

Because of our Alma Mater being located in Cleveland, it has been customary to carry out rushing by treating the frosh to shows and dinners down town. However, since our new home is large enough to hold regular gatherings, most of our rushing took the form of parties at the house. This helped us wonderfully in securing many of our new men.

A party was held at the house on Hallowe'en and everyone agreed to having had a fine time. Music and dancing seemed most popular. The house was all "fussed up" to fit the occasion and our old friend pumpkin was scattered around promiscuously, so to speak, as most of us well remember.

Soon after this, an informal dance was held at Windermere, together with Delta Zeta, proved to be a satisfactory affair.

On December twelfth, Delta Alpha, in conjunction with Delta Zeta and the Alumni Chapter gave a formal dance at the Euclid Club. The receiving line was opened at nine-thirty and dancing began immediately after all had gone through this ceremony. Supper was served at twelve, and all the wit and humor that had been lying dormant for ages was brought forth. As soon as this was over, dancing was continued until four. All of our active men were present and a number of our alumni came back to indulge. All were of the opinion that this party was "regular".

The Cleveland Sigma Nu banquet, held at the Colonial Hotel, proved the best ever. "Doc" Alton was toast master and was well chosen. Brother Francy responded in a way that is all his own to the Delta Alpha toast. Much good music helped to inspire the speakers so that the program was exceptionally good.

An informal dance on March sixth, given by the two active chapters, conflicted with a school informal so that only about half the chapter attended it. This conflict was unavoidable, but those who attended had a glorious time.

The last affair, up to the time of going to press, was an informal dinner-dance on April twenty-second. Dinner was served at the house at six-thirty and this was followed by a dance at the Roadside Club. This proved to be the best informal party of the year. About forty attended the dinner, and some of the alumni, who could not get out to the house, were at the dance. Everyone hopes that our next affair, which will be open house at commencement time will prove to be as good as this party was.

These parties just recorded, together with the School Prom at the Statler and school informals and other social functions, afforded Delta Alpha the best social year ever.



L. W. Callender

DELTA ALPHA'S ACTIVITIES AT CASE.

Just to let you know what Delta Alpha is doing for Sigma Nu in the activities of the college, we publish this list of the more important activities.

FOOTBALL.

Elmer Francy is by far the best athlete ever produced by Delta Alpha. Brother Francy played on the varsity three years and was captain the third year. During the fall of 1913 he acted as assistant coach.

Brother Lynn Calendar is another man who has represented us on the varsity. He has played on the team two years, failing to make it three straight years by only one game. Lynn played at left end during his Junior year and as utility man during his Senior year.

BASEBALL.

During the spring of 1913, we had three men on the baseball team, Brothers Clemens, Beckman and Francy. Francy was captain and coach.

This spring we have two men on the team, Brothers Clemens and Beekman.

CLASS OFFICERS.

Geo. Clemens, Senator, Junior Class;
Roy Williams, Secretary, Junior Class;
Stanley Krall, *Chair*. Banquet Committee, Sophomore Class.

JUNIOR COMMITTEES.

Junior Dance Committee—Geo. Clemens.
Junior Banquet Committee—John Wenrick.
Annual Board—Geo. Clemens.
School Supper Committee—Geo. Clemens, *Chair*.

MUSICAL CLUBS.

W. Roy Williams, Leader of Mandolin Club.
H. L. Kidder, Glee Club.
Karl F. Benner, Glee Club.
J. Ingersoll, Glee Club and School Quartet.
Brother Williams as leader of the Mandolin Club made it the best club it has been in the history of the school.

HONORARY CLASS SOCIETIES AND PROFESSIONAL FRATERNITIES.

Skull and Bones—Geo. Clemens, Roy Williams.
Alpha Chi Sigma—Stanley Krall.

TRACK ATHLETICS.

Along this line the fraternity has been represented by one "Hans" Wenrick. He made a place in the half-mile at the meet between Oberlin, Case and Reserve. This is his first year out and it looks as if he will make his letter.



CHAPTER HOUSE

HOUSE FUND.

It is the custom at Delta Alpha for each man upon graduation to subscribe one hundred dollars to a house fund. This custom has been observed with but few exceptions and there is now subscribed, from this source, and by a few loyal Sigs who were instrumental in the founding of the Chapter, a sum of \$2,735.00. Of this amount \$630.00 has been paid in. Accrued interest on this sum amounts to \$19.64, which brings the total cash on hand up to \$649.64.

A house fund committee consists of one member from each of the three upper classes. This committee is self-perpetuating, a new member being elected before the senior member graduates. It is the duty of this committee to look after the signing up of the notes, and to collect them as they become due. When money is paid in to this committee, it is turned over to a trustee, who is elected by the chapter. Bro. Geo. A. Waddle now serves in this capacity.

The trustee makes such disposition of this money as he deems wise, the restriction being that it shall not be used for any purpose other than that of acquiring a chapter house, without the consent of the donors. The funds are at present deposited in a savings bank and draw four per cent interest.

The subscribers to the house fund are as follows:

W. A. Buell.....	\$200	Don C. Orwig.....	100.
W. E. Myers	15.	H. R. Smith.....	100.
S. E. Fouts.....	15.	F. E. Brooks.....	100.
Geo. H. Smith.....	20.	Geo. T. Williams.....	100.
T. B. Tallmadge.....	20.	H. B. Herron.....	100.
R. Alkinson	60.	M. C. Goddard.....	100.
S. G. Hebben.....	100.	J. A. Moffet	100.
L. L. Hopkins.....	100.	E. R. Howells	105.
M. L. Burchfield.....	100.	H. C. Lynch.....	100.
F. E. Bloxham.....	100.	E. N. Francy.....	100.
D. W. Leggett.....	100.	G. H. Bales.....	100.
D. A. Gilbert.....	100.	L. W. Callender.....	100.
C. W. Francy.....	100.	H. F. Henthorne.....	100.
H. H. Woods.....	100.	W. E. Kneale.....	100.
W. R. Denman	100.	F. E. Snell.....	100.
		Total.....	\$2,735.

ALUMNI NOTES.

Brother Williams attended our Prom. He is now employed as Assistant Chemist of the By-Product Coke Plant at Youngstown, Ohio. Tramp still possesses a liking for Fatimas.

Brother Darr has called on us several times during the year. He is as much interested in Port Clinton as ever. Surely even Port Clinton must have its attractions!

Brother Stewart was present at our annual Prom. The evening of the dance found Don in full war paint. Don succeeded in getting away with the new dances in a most creditable manner, notwithstanding, that "You don't dance as we do in Virginia" came repeatedly from *his corner*.

Brother Keim was with us on the occasion of our May party. We sincerely hope that Brother Keim's health will permit of his entering college again next fall.

Brother Herron has turned his back on bachelorhood. To Brother Herron and his charming wife we extend our hearty wishes for years of happiness and prosperity.

Brother Gilbert paid his respects to Delta Alpha on his return from the Canal Zone. A year in Panama has thoroughly familiarized Brother Gilbert with that country, and he delighted us on his return, with his many stories of Canal life.

Brother Smith is in the employ of the Department of Agriculture at Washington, D. C. Two of our seniors, Brothers Henthorne and Kneale, while on the Senior Inspection Trip, called on Brother Smith. They report that Brother Smith's baby girl reflects all of daddy's amiable personality.

Brother Orwig visited us a short time ago. While here he gave ample proof of his being as much of a mandolin enthusiast as ever.

Brother Burchfield is a frequent visitor at the house. Burch rarely misses any of our parties.

Brother Hopkins is one of the leading men in the Pittsburgh Alumni Chapter. Hop calls on us often but his visits are interspersed with much business—for Hop is a busy man. He is an illuminating engineer for the Macbeth-Evans Glass Co.

Brother Woods is associated with the Lease Neville Co. of Cleveland. Within the past few months Brother Woods has developed the art of "fussing" to a nicety. Possibly a great deal of this is due to his excellence as a photographer. Brother Woods and his "Brownie" are familiar sights in Wade Park these warm days. Brother Woods is now staying at the house.

Brother Leggett has been appointed Bridge Engineer of Ashtabula County. Brother Leggett spent a week with us last January while taking the Bridge and Roads course at Case.

Brother Brooks is in the employ of the New York Telephone Company. Bullet returned to Delta Alpha soon after Christmas to renew old friendships. While here he gave us his renowned imitation of an Englishman.

Brother Hulien is still at the Union Club. Hap is no stranger to Delta Alpha.

Brother Moffett is to be commended for the interest he has shown in the affairs of Delta Alpha. Brother Moffett is one of our most valuable advisors.

Brother Buell visited us early in the year. While here Brother Buell called several of the old class together. Brothers Francy, Leggett, Woods and Hopkins responded. Needless to say a hearty good fellowship prevailed of which even we younger men were able to catch the spirit. Brother Buell is at Sulphur, La.

Brother Francy is now living at Chester, West Virginia. He is employed by the Tri-State Railway and Electric Company of East Liverpool, Ohio.

Brother Bales has accepted a position with the H. W. Johns Manville Company of Cleveland. Brother Bales' ambitions received a severe jolt some time ago when his eye unexpectedly collided with a base ball which he was attempting to catch. Since then, he has engaged, solely, in the refined and gentle game of handball. Brother Bales is staying at the house.

Brother Atkinson is doing research work for the National Carbon Co., at the Fostoria, Ohio, plant.

Brother Waddle is the happy father of a baby boy. We bespeak for the newcomer a bright future. May he live long and prosper!

Brother Jacobson is now one of our benedicts. Mrs. Jacobson was formerly Miss Ethel Ryhs of Cleveland. The happy couple is now living at Sulphur, La.

CHAPTER ROLL.

- 1 Clark Wilson Francy, Toronto, O.—With the Tri-State Railway & Electric Co., of East Liverpool, Ohio.
- 2 Walter Ross Denman, 845 Burwuyt St., Akron, O.—The Goodyear Tire & Rubber Co.
- 3 Roy Edward Berridge, 7 Fern St., Ashtabula, Ohio.—Inspector L. S. & M. S. Ry. Co.
- 4 Dwight Walton Leggett, 10 King St., Ashtabula, Ohio.—Civil Engineer in County Engineer's office.
- 5 Thomas Earl Bloxham, 108 E. Borden Ave., Syracuse, N. Y.—Electrical Engineer with New York Telephone Co.
- 6 Charles William Cleveland, Greenfield, Ohio.
- 7 Harold Haines Woods, Sigma Nu House, Cleveland, O.—Lease Neville Co., Cleveland, O.
- 8 Walter Augustus Buell, Sulphur, La.—Mechanical Engineer.
- 9 Clayton Earl White, 1235 Marlo Ave., Lakewood, Cleveland, Ohio.
- 10 James Wilson Cleaveland, Greenfield, Ohio.
- 11 John Floyd Schaefer, 820 Essex Bldg., Newark, N. J.
- 12 Samuel Galloway Hibben, 5599 Baum Blvd., Pittsburg, Pa.—Electrical Engineer with the MacBeth Evans Glass Co.
- 13 David Alva Gilbert, General Delivery, American Bridge Co., Ambridge, Pa.
- 14 Carl Jacobsen, care Union Sulphur Co., Sulphur, La.
- 15 Don Carl Orwig, Napoleon, Ohio.—With the Northwestern News Company.
- 16 Martin Luther Burchfield, Jr., 12509 Launcelot Ave., Cleveland, O.
- 17 Ralph Howard Atkinson, 144 East Tiffin St., Fostoria, Ohio.
- 18 Frederick Earl Snell, 9419 Harvard Ave., Cleveland, Ohio.—Student.
- 19 Glen Harrison Bales, Sigma Nu House, Cleveland, O.—With The H. W. Johns-Manville Co., Cleveland, O.

- 20 Elroy Ramsey Howells, 5105 Cates Ave., St. Louis, Mo.
—St. Louis Telephone Company.
- 21 Lynn West Callendar, Sigma Nu House, Cleveland, O.
- 22 Lawrence Leonard Hopkins, 5599 Baum Blvd., Pitts-
burgh, Pa.—Electrical Engineer with Macbeth Evans
Glass Co.
- 23 Elmer Norris Francy, Toronto, Ohio.
- 24 Charles Franklin Hulien, care Union Club, Cleveland, O.
- 25 James A. Moffett, 1397 E. 109th St., Cleveland, O.
- 26 Murray Cowdery Goddard, Unionville, Ohio.—Civil En-
gineer.
- 27 John Francis Maline, Sigma Nu House (Reserve),
Cleveland, O.—Civil Engineer with Queisser-Bliss Co.
- 28 Harry Clifton Lynch, 416 Sherman Place, Mansfield, O.
—Civil Engineer, City Engineer's Office.
- 29 Donald Gardner Stewart, New Cumberland, W. Va.
- 30 Harry Fovargue Henthorne, Sigma Nu House, Cleve-
land, Ohio.
- 31 Thurlow York Keim, 696 East 115th St., Cleveland, O.
- 32 Victor Bolton Hough, Nelsonville, Ohio.
- 33 Horace Bee Herron, 4721 Northcote Ave., East Chicago,
Indiana.
- 34 Forrest Edmund Brooks, 211 West 117th St., New York
City.—Electrical Engineer with New York Telephone
Company.
- 35 Howard Rodney Smith, 611 Gresham Place, Washington,
D. C.—Government Chemist.
- 36 George Tranter Williams, 55 Warren Ave., Youngstown,
Ohio.—Chemical Engineer with Republic Iron and Steel
Company.
- 37 William Edward Kneale, Sigma Nu House, Cleveland,
Ohio.—Student.
- 38 William Roy Williams, Sigma Nu House, Cleveland,
Ohio.—Student.
- 39 Phillip Morris Stambaugh, Glenwood Ave., Youngstown,
Ohio.

- 40 Jonathan Ingersoll, Sigma Nu House, Cleveland, Ohio.—Student.
- 41 John Courtney Wenrick, Sigma Nu House, Cleveland, Ohio.—Student.
- 42 Charles Leo Darr, Port Clinton, Ohio.
- 43 Geo. Leaffler Clemens, 42 Holyoke Ave., East Cleveland, Ohio.—Student.
- 44 Elmer Herman Beckman, 10919 Churchill Ave., Cleveland, Ohio.—Student.
- 45 Howard Witzel Vanderwerf, 7420 Carnegie Ave., Cleveland, Ohio.—Student.
- 46 Darwin, Alexander Hindman, Sigma Nu House, Cleveland, Ohio.—Student.
- 47 Stanley Krall, 3503 Woodbridge Ave., Cleveland, Ohio.—Student.
- 48 George Monroe Kryder, 16 Nelson St., Akron, Ohio.—With Akron Chemical and Compound Company.
- 49 Howard Lorin Kidder, Sigma Nu House, Cleveland, O.—Student.
- 50 Louis Allaine De Coudres, Sigma Nu House, Cleveland, Ohio.—Student.
- 51 Theodore Edward Hays, 2323 Irving Ave., South Minneapolis, Minn.
- 52 George Howard Markt, Sigma Nu House, Cleveland, O. Student.
- 53 Kenneth Lynn Chrysler, 109 N. 31st St., Billings, Mont.
- 54 Charles Walter Allen, 70 Prospect St., Ashtabula, Ohio.
- 55 Paul Allen Bloom, Sigma Nu House, Cleveland, Ohio.—Student.
- 56 Harold Church Hopkins, Cedar Ave., Cleveland, Ohio.—Student.
- 57 Carl Fritz Benner, 2182 East 74th St., Cleveland, Ohio.—Student.

