

DELTA ALPHA  
NEWS LETTER

'22

Sigma Nu

==

Case School

*of*

Applied Science

Cleveland

Ohio



## Dedication



TO the loyal brothers of the past years, who made possible its publication, we take pleasure in dedicating this book.

We know them to be steadfast and true Sigma Nus to the last ditch, and we wish they might be with us again to live over the work and pleasures of college life.

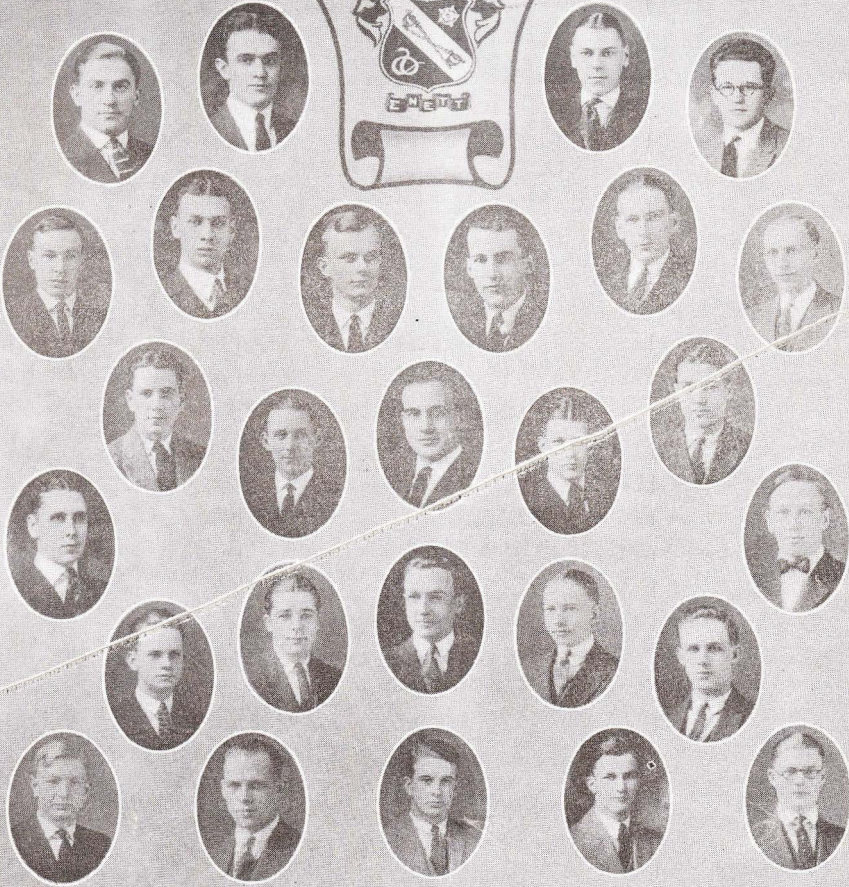
## *Foreword*

**W**E ARE disposed to feel rather proud of the accomplishments we have reached this year. Some of them have been material, and some less tangible but no less to be sought.

The problems which confronted us from the beginning of the year were many and varied, and sometimes seemed almost insurmountable. By singleness of purpose and constant effort on the part of every man we have been able to conquer them one by one and now stand at the end of the year with a clean record.

We have proven to ourselves that the cardinal virtues of fraternity life are generous loyalty and readiness to do hard work for the common good. We know that only in the possession of these qualities can we hope to be of any service either to ourselves or to society, either here or in life, when our college days are past.

# SIGMA NU



|               |         |           |        |             |               |
|---------------|---------|-----------|--------|-------------|---------------|
| Landis        | Roberts |           |        | F. A. Allen | Torgler       |
| A. H. Vaughan | Jones   | Stofer    | Temple | Knowlton    | H. G. Vaughan |
| Maxwell       | Goll    |           | Donkin | Clark       | Himes         |
| J. J. Allen   |         |           |        |             | Harvey        |
| Burwell       | Kuhn    | Cover     |        | Franklin    | Sheafer       |
| Brumagin      | Bauman  | Hemingway |        | Hammond     | Lenhart       |



## The House

**EARLY** this spring we came to the definite conclusion that our house, as it was, did not satisfy us. We therefore set out with no further words to amend matters.

Specifically, we had a perfectly good floorspace downstairs, about fifteen by thirty feet, that was cut up into two rooms. We didn't want that partition there, so we transplanted it temporarily into the back yard. Our original plan was simply to remove the partition and do the plastering necessary to make the resulting room presentable. When we got it out, however, the improvement and the possibilities were so great that we couldn't be content without making a "regular" room.

In consequence, every man in the chapter spent his available leisure for the next month in remodeling, with results that were remarkable and gratifying. The principal features of our accomplishment are these—completely redecorated walls and refinished woodwork, two new brick fireplaces instead of the "antique" tile ones, new lighting fixtures, and a new rug.

Brother Reath Parks was our presiding genius. He worked himself, bossed the rest of us, and furnished ideas at all times, under any provocation, till we got the right ones.

To Brothers Parks, Benton Hopkins, Temple and Bauman we wish to give due credit for their work as specialists. Brother Parks painted the walls and varnished the woodwork. Brother Hopkins stands out as an expert in the refinishing of window frames, floors, and doors. Brother Temple is a master layer of hardwood floors, and we point with pride to the stencil (?) border that is "Temp's" handiwork. Brother Bauman is a bricklayer par excellence. "Les" spent a generous amount of time on the job, and when he got done we possessed the new fireplaces above mentioned. The next time you see us, we invite you to inspect them and the tile hearths he made for them.

For the rest of us, possibly less gifted, no individual mention is here fitting. But we all graced our overalls to perfection, and we are ready to say that we never gained more satisfaction than that which we earned in the success of this undertaking.

## SOCIAL DOINGS

Delta Alpha never has laid much claim to the reputation of being a chapter of "lounge lizards." In fact, we would emphatically deny such an accusation. But on those happy occasions when we do get together and put on a social affair, everyone agrees that it's a real time. Gather 'round with us when we talk the party over at the house, and you'll want to add your say-so just as enthusiastically as we do. The girls like us, too, as we know from sure report.

During the first semester we held the annual Pledge Dance at the Case Club, and a Christmas Dance in conjunction with Delta Zeta at the Woman's Club. In April we again joined the Reserve brothers under similar circumstances.

The happy climax of the social season came with our formal dance at the Hotel Winton on April twenty-eighth. Several brothers from Delta Zeta and Beta Iota were with us. "The best ever" is the least tribute anybody was willing to accord us.

We cannot pass without mention of the three house parties held this spring. "Eddy Torgler's impromptu dances" have become a by-word among us. With the fine appearance of our house, we can hold just about the most delightful kind of house party you can imagine.

## TWO REAL SIGMA NUS IN CLEVELAND

Last year when the Case Alumni Association decided to pep things up and make a real live organization, they came to Sigma Nu for a man to run things. That man was Brother Ray Finger, Xi. Brother Finger's ability and personality won him a place in the regard of every man on the campus, and accomplished wonders in the organization. In fact, he was so good that the job wouldn't hold him. "Ray" is now with the Ad Club, and you can just watch his smoke in the future.

Another Sigma Nu now holds the place left by Brother Finger. O. L. Allanson, better known as "Oley," is a schoolmate of Ray's. "Oley" is one of the most popular men on the campus, and he deserves it. The Alumni Association is doing big things, and Brother Allanson just about is the Alumni Association.

We predict that it will not be long before "Oley" comes into his just reward. You'll hear more about him.

## THE LADIES' AUXILIARY

We could not possibly consider this book complete if we did not tell about the Ladies' Auxiliary and the fine interest its members have taken in us this year.

This organization was formed at the middle of the year, following a tea given at the house for the mothers of men living in town. Membership is now open to the mothers, wives, and sisters of all Sigma Nus men, whether they live in Cleveland or not.

We greatly appreciate the many things the ladies of the Auxiliary have done for us. We are glad that they want to know how we live about the house, and what the problems are that we have to meet. We especially want to thank Mrs. Temple-Fairfield and Mrs. Sheaffer, the officers of the Auxiliary, and each member, personally, for the time and work that they have spent; and we certainly hope that the organization will be permanent at Delta Alpha.

# The Chapter

## SENIORS

### JOHN JAMES ALLEN

East Technical High School

Tau Beta Pi

Alpha Chi Sigma

Glee Club (1), (2), (3), (4); Leader (3), (4)

Alembic Club

"Johny" is the engaged man of this year's class. His frequent trips to the "Heights" require a great deal of time, but he manages to sandwich in a few other things. He has led the Glee Club for the last two years, controlled the destinies of the honorary Chemical Society, Alpha Chi Sigma, and taken a very active part in the Alembic Club. He made Tau Beta Pi in his Junior year.

John is the man who tried to blow up the Chem Building and only succeeded in taking a week's rest in the hospital.

He has taken much more than the average interest in the chapter and has competently filled a number of offices. He is hoping to get a good job in chemical work, but he is sure of spending-money through his singing with the All Star Quartette.

### CARL BEVAN JONES

Western Reserve University

Mechanical Club

After spending two years at Reserve, Carl came across the fence to absorb some practical knowledge. He is our only married man and takes his studies so seriously that he does not have much time left for activities.

He and "Bob" seemed to have an entertaining time when they played with "Johnny's" Ford motor and called it thesis work. Anyway, they afforded a good deal of amusement to the casual spectators.

With his capacity for hard work, and the added incentive of supporting a family, Carl should be the first man to land a really worth-while position.

### ROBERT FORTUNE KNOWLTON

Ashtabula High School

Athletic Association, (4)

Fraternity Basketball, (3), (4)

Mechanical Club

After losing three years from his college course, due to his service in the Lakeside Unit, "Bob" is finishing his work in fine shape. The good condition of the internal affairs of the chapter is due primarily to his efforts. He has been Commander for the entire year. If there is any possible criticism of his handling of the job



it is that he worked too hard, for he has kept track of even the smallest details. Even with all his work at the house he took an active part in the affairs of the Athletic Association and found time to play a guard on the fraternity basketball team.

"Bob" stayed pretty close to the house the first part of the year, but for the last few months it was an even chance whether you found him at the house or didn't find him at all.

### **JOHN LOTHAIR LANDIS**

Lincoln High School  
Oberlin College  
Fraternity Basketball, (3), (4)  
Alembic Club

Landis was graduated from Oberlin College with an A. B. degree. A scholarship, awarded by a prominent chemical company prompted him to come to Case. Unhappily, John used all of his eligible years in Ohio Conference Athletics at Oberlin, and has had to content himself with inter-fraternity contests. He was the mainstay of the championship Sigma Nu basketball team of 1921, and again this year when the team remained undefeated until the final contest. When Delta Alpha puts forth any kind of an athletic team, Landis is pretty sure to head it, for he is an all-round athlete.

### **HAROLD FREDERICK ROBERTS**

Barberton High School  
Carnegie Tech, Delta Sigma  
Tech, (3), (4)  
Athletic Association, (4)  
Business Editor of Handbook  
Pick and Shovel Club, President, (4)  
Case News Service and Publicity Bureau, (4)  
Honor Key

"Red" is the man who transferred from Carnegie Tech and immediately started to work for recognition on our campus. He has been very successful, for he took over Brother Torgler's job as Fraternity Editor of the Tech, was elected president of the Pick and Shovel Club, held a position in the Athletic Association, handled the student publicity for the Alumni Association, and received an honor key for his efforts.

### **JOHN MILTON STOFER**

Lakewood High School  
Alpha Chi Sigma  
Owl and Key  
Case Tech, (2), (3), (4); Business Manager, (4)  
Assistant Business Manager, Differential, (3)  
Athletic Association, (4)  
Alembic Club  
Honor Key

"Jack" Stofer is the best example of a dual personality in the chapter. In normal times he is the quiet, suave, business man. At meetings he resembles a Russian Communist by his bursts of oratory when he seeks to right wrongs. "Jack's" business ability has been developed by several years' work on the Case Tech and his work last year as assistant business manager of the Differential. Stofer just retired as business editor of the Case Tech, and he deserves great credit for having pulled the Tech through a hard year.

He is a member of the honorary chemical society, Alpha Chi Sigma; the senior honorary society, Owl and Key; and will receive a Case Honor Key.

### **ROBERT BRUCE TEMPLE**

Perkiomen School

Tau Beta Pi

Owl and Key

Mandolin Club, (1), (2), (3), (4); Leader, (3), (4)

Class Historian, (2), (3), (4)

Differential Board, (3)

Mechanical Club

The Mandolin Club recently lost a good leader when Temple stepped out of office after having served two years in that capacity. However successful "Temp's" musical career at Case has been, he is still more dangerous as a contender for scholarship honors, and he has scholarship keys from Tau Beta Pi and Delta Apha chapter to prove it. He belongs to the Owl and Key society.

Temple is quiet but there has never been a better worker about the chapter house. During the recent redecorating period, Temple was the lead-off man in the work. Delta Alpha will look a long while before they find a better Sigma Nu than Temple has been and always will be.

### **EDWARD RAY TORGLER**

New Philadelphia High School

Apha Phi

Skull and Bones

Owl and Key

Associate Member of Sigma Xi

Case Tech, (2), (3), (4); Editor, (4)

Differential Board, (3)

Boost Case Association, (4)

Class Treasurer, (3)

Pick and Shovel Club

Editor of Handbook

Torgler has been a member of the "big four" during his four years in the Class of '22. He has taken a very prominent part in the student activities. As a result, "Eddie" has quite a complete

collection of jewelry. Besides his Sigma Nu badge he owns a pin for each of the class honorary societies, a key for Sigma Xi, a Case honor key, and a Pick and Shovel pin. He even covets the fraternity scholarship key for this semester.

Torgler's major "offense" at Case consisted of his piloting the Case Tech for this year in which time it showed a marked improvement. He also edited the Case Handbook for next year, and held a position in the Boost Case Association.

Around the chapter house "Eddie" has been handicapped by being a town man for his last two years, but he managed the Treasurer's position for one year and is at present engaged as a very active chairman of the social committee.

## JUNIORS

### HAROLD GAR VAUGHN

Basketball (2)  
Alpha Phi  
Skull and Bones  
Case Club, (3)  
Class President, (3)  
Senate, (2)  
Boost Case Association, (3)  
Honor Key (3)  
Differential (3)

"Baldy" is one of our two New Yorkers, but you may see from his list of honors that he is rapidly living it down. He is one of the most popular and active men in the Junior class, and will be a real leader in school next year.

Baldy has gotten through school so far with no serious difficulty. He says he would like to make Tau Beta Pi, but holds out no great hope. We think he can cheer up on that score, because a man of his personality can't help going a long way. He is Commander-elect for next fall.

### ARTHUR HARRIS VAUGHAN

Mechanical Club  
Differential (3)  
Tech (3)

"Art" started his work at Case with the class of 1922, but a yearning for experience kept him out of school last year. In school Art has made the Tech staff and the Differential Board, due to his ability to push a wicked pen. In the chapter he was Reporter for the past year.

As a conscientious, hard worker he has done much for the advancement of the chapter and has managed to pull in some grades at the same time.

## WILFRED THOMAS DONKIN

### Pick and Shovel

We don't know from just what angle we can attack "Bill." You never can get anything on him because there is nothing to get. He is a man who lives up to the spirit of Sigma Nu with all his might. We will all bear testimony that there is not a better liked man in the chapter.

Bill is a miner and we know he'll be a good one.

## SOPHOMORES

### FREDERICK A. ALLEN

Swimming Team

Alpha Phi

The other half of the Allen Brothers is none less than "Freddy." Fred drops in on us usually from three to five times a day, though he lives far in the wilds of East Cleveland.

He is not a man who does a lot of talking, but you have to be careful in "kidding" him, because he turns jokes pretty easily. Freddy is an Alpha Phi man and a first-rate swimmer. We have elected him treasurer for next year, which shows what we think of him.

### RICHARD PAUL BUCHMAN

Leaders Corps

Swimming Team

Brother Buchman returned to school last fall after working several months in Canton. Dick is a live wire around the house, and as table manager deserves much credit for the fine way he has handled his job. Dick captained our swimming team and played guard on the Fraternity basketball team. He is also a member of the Leaders Corps.

### HOWARD HOY CLARK

"Tech" Business Staff

Alpha Phi

When you hear somebody down at the end of the table make a sarcastic remark in a sort of a wee, small voice you may know that it's "Hoy." By way of explanation, he is our popularly accepted jokesmith.

"Hoy" spends a lot of time doing work on the Case Tech, but in spite of that he has had time to run the Chapter finances for the past year.

We might try to tell several things we've had "on" him this year, but he has a way of coming back and maybe we'd better not try.

### GERALD MATHIOT COVER

Pick and Shovel Club  
Senate, (2)  
Leader Pushball, (2)  
Leaders' Corps, (2)  
Vice-President Y. M. C. A., (2)

Jerry is one of the most popular men in the Sophomore class. His home is Poland, Ohio. Brother Cover was leader of the class of '24 in the Pushball contest this year. He is in a good share of the school activities, and you can expect to hear more from him.

### FRANK DONALD GOLL

Denison University, 1919-20  
Mandolin Club

Frank hails from Loudonville, Ohio, but that's all right—we forgive him, for he's one of our promising musicians. He operates on the flute in the Mandolin Club, and at sundry times about the house. Besides this, he may, in the course of a few years, learn to play the mandolin.

Frank is another man who goes well in society. He is the only sophomore mechanical, but we congratulate him on keeping up the good work.

### HAROLD PHELPS HARVEY

Pick and Shovel Club

"Harv" comes from Kent, Ohio. He is well known in school, especially among the Miners. "Little Harold" was one of the best men on the Fraternity basketball team. He may be small, but he covers the floor. Harv landed a berth on the Sophomore football and basketball teams and also was out for varsity football. As a practical joker he is well known to all the brothers.

### EUGENE NOBLE HIMES

Football Marshall  
Boxing

An addition to our Canton representation is present in the person of "Gene," otherwise referred to as "Rudolph Valentino." "Gene" certainly does look pretty fine when he gets decorated with a Tuxedo, and reports from Painesville, Ohio, have it that he makes quite a hit.

He is quite a boxer, though he and Dick Buchman put on a wild exhibit in the recent past, with results that were visible on Gene for some days.

## VERGIL MILTON MAXWELL

Captain, R. O. T. C., (1)  
Alpha Phi  
Class Treasurer, (2)  
Pick and Shovel Club

Perhaps the reason "Verg" is so often absent from our midst could be found if we searched among his feminine acquaintances for about one girl. However, in spite of his handicap he always shows up for smokers and initiation, and his handsome countenance is very welcome.

## KENNETH PIERRE McNAUGHTON

"Mac" is a Civil who came to us from Delta Zeta. We sincerely hope he will stay with us for the remainder of his college career. "Scotty's" long suit is social activities—he misses very few parties either here or at Reserve. One of our best house parties will live long in our memory as "McNaughton's Hot Fudge Party." Mac will hold the position of Table Manager when school opens next fall.

## FRESHMEN

### LESTER WILLIAM BAUMAN

Glee Club

"Les," the songbird of Delta Alpha, has made a fine start at Case. He comes all the way from the West Side, but that doesn't prevent him from being with us a good bit of the time. Les has been handicapped because he has been out of school several years, but in spite of that he is a real live wire.

### IVAN STANLEY BRUMAGIM

We don't hold it against "Ive" that he hails from Westfield, New York, and receives anywhere up to five letters a day from there. He knows a good grade when he sees one, and he gets plenty. Furthermore, he's going to be an athlete.

### GORDON EDWARD BURWELL

This tall member of our Ashtabula representation is a boy with lots of pep. Also he is rapidly recovering from a tendency to quietness. Gordon is on the "Tech" business staff. He plans to be an electrical engineer.

## ROBERT DEE FRANKLIN

Akron, Ohio, is represented among the Freshmen this year by Bob Franklin. Bob has given us some real surprises this semester by knocking off top-notch grades. He is out for the "Tech" staff, and reports the Sigma Nu news for us.

## CHARLES JACKSON HAMMOND

We look upon "Jack" as a future Tau Beta Pi. We don't see how he can help it. Jack is a scholarship man from East High. He never says very much, but he doesn't need words to do things.

## THEODORE SHEAFER

The supply of chemists will receive one valuable addition in the future if "Ted" follows out his present plans. Ted came to Case from West Tech High School. He is a coming athlete—there are a good many men on fraternity basketball teams who will testify that it is hard to get around him, and impossible to get "thru."

## PLEDGES

"Harry" Hemingway (they say his name is Henry, but he won't let us call him that) is a product of Rutgers Prep. Along with his partner, "Chuck" Kuhn, he hopes to be initiated this spring.

## "NEAR-ALUMNI"

Delta Alpha lost two lively members of her family last February in the persons of Walt Eynon and Red Lenhart. Walt was a Junior when he fell by the wayside; and we certainly can notice the gap his absence leaves. Walt gets—and keeps—wherever he goes, a few more friends than anyone else we know. We'll be glad when he comes back next fall for "more."

We also expect and hope that Red is with us again. Just now he is working down at Washington, Pa. We know he can do the work here and we're sure he will.

The middle of the second semester brought us some more sorrow when we lost "Ed" Williams from the Freshman class. Ed was the crack center on our basketball team. He was out of school a couple of weeks by necessity and sort of lost touch with the pros. However, we're going to welcome him with us again in the fall.

## On The Campus

We haven't said much about the standing of Delta Alpha men on the campus. If you have read this book carefully you will know that it is unnecessary.

We are represented in every activity on the campus. The Annual, the Tech, the student governing bodies, the honorary fraternities and class societies, have all been shared by Sigma Nus this year.

While perhaps it does not seem as if we have a preponderance of athletes, we wish to call your attention to the work of our basketball team this year. We played all through the regular schedule and up to the last game in the finals without a defeat. Of course we were pretty badly disappointed when we lost that last game to the Kappa Sigs. But we don't feel that our showing requires any apologies. We want to hand a lot of credit to the boys who went out night after night and fought for Sigma Nu.

We are proud to relate the fact that the chapter stood first among eleven fraternities in scholarship last semester. The standings for the second term are not available yet, but we have reason to believe that the performance will be repeated.

Not a bad record, we think. It is a standard that will fire our ambition next year and in future years, for the honor of Delta Alpha.



## Alumni Notes

Walt Buell is reported to be quite a prominent citizen of Aurora, Illinois. He is president of the Aurora Dramatic Club; besides his regular position with the Barber-Greene company.

Bryan Packard is now with Rathbone, Sard and company, but still in Aurora. We hear he contemplates heading for Cleveland in the near future.

L. W. Callender is still down in Texas, but we hope he gets back in our midst before long.

Sebelin is in the insurance business in New York City. He's now the head of a family of three. The addition is Ellen Ann, born July 31, 1921.

C. F. Benner makes his headquarters in Cleveland, from whence he radiates in various directions in a Ford with the red sign of the Willard Storage Battery Co.

Don C. Orwig is in the publishing business in Napoleon, Ohio.

"Duke" Le Pontois now manages his own business, the Carnegie Body and Top Company. We hear rumors that he may assume the responsibility of being a husband before long.

Sam Hibben extends the hospitality of his home and his office to any brother who strikes New York. He is with the Westinghouse Lamp Co.

Delta Alpha has a new chapter adviser in the person of Glen Bales. Glen always has lots of good things to tell us, and he's with Delta Alpha from start to finish.

We are happy to report four newly-made Benedicts from the chapter. A. L. Vanderhoof and Miss Sara Benson were married in February. The Vanderhoofs make their home in Bristol, Tenn., where Vandy is coach of athletics at King College.

Don Brooker, '21, was married in December to Miss Catherine Bartholomew. Their home is in Cleveland. Don is with the New York Central.

C. T. Carlson was married on the first of January, 1922. He's located in Cleveland.

Leland "Sol" Firestone is down in Lisbon, Ohio, the town of his youth. He was married last summer to Miss Dorothy Morris. Sol is Commander of the Lisbon Post of the American Legion.

John MacCullough is expending a lot of his pep in the activities of the Tuscarawas County Alumni Chapter. He writes to us from New Philadelphia.





